



Cross-Border **OPERATIONS**

PGT Laredo, TX
Southbound Process Overview

pgttrucking.com | 724.987.1590 | svillarreal@pgttrucking.com

853 Nicolas D. Hachar Rd., Laredo, TX 78045

STEP-BY-STEP PROCESS OVERVIEW

1

LOAD ASSIGNED TO PGT PROUD PROFESSIONAL DRIVER

Detailed pick-up information is provided via load script.



2

SECUREMENT PHOTO CHECK

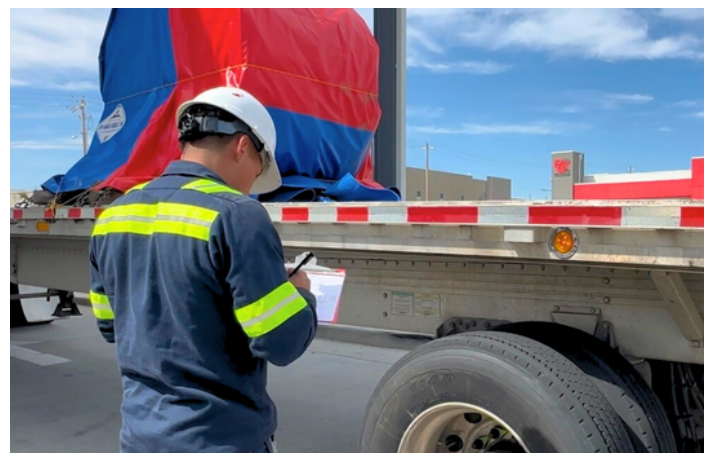
Once loaded, PGT Driver will send load securement and tarp photos for approval by the Fleet Manager and Safe Operations Manager.



3

LOAD IN TRANSIT

After load securement is approved, PGT Driver will proceed in transit to PGT's terminal in Laredo, TX.



4

TERMINAL INSPECTION

Upon arrival to PGT Laredo, PGT Driver will undergo a thorough inspection process to verify the condition of the equipment and commodity. Photos of the commodity are taken.

5

FREIGHT FORWARDER

The loaded trailer is dropped at the assigned freight forwarder to await border clearance. Load will be inspected and approved for entry. The commodity is not moved from this trailer.

CROSS BORDER TRANSPORTATION

Southbound: United States to Mexico

6

STATUS UPDATE AND BORDER CLEARANCE

PGT Southbound Coordinator notifies the assigned customs broker and Mexican partner of the load's arrival and location.



7

BORDER CROSSING

Once load is cleared, PGT Southbound Coordinator collaborates with Mexican partner to complete border crossing. The trailer used to load the commodity in the U.S. is the same trailer used to cross the border and deliver into Mexico.



8

NUEVO LAREDO YARD

Loaded trailer is dropped at PGT's Mexican partner's Nuevo Laredo yard to await dispatch with the over-the-road driver. These drivers are thoroughly vetted and trained according to PGT's standards.



9

LOAD IN TRANSIT

Load is dispatched and tracked to its final destination using the same trailer it was loaded on in the U.S.

10

Delivery

Load is delivered successfully.

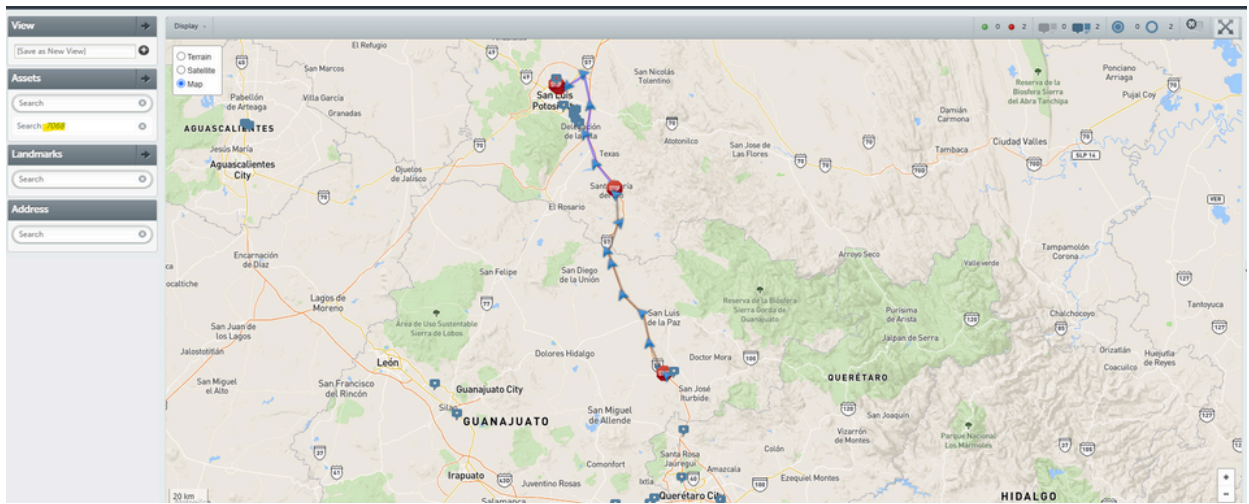
CROSS BORDER TRANSPORTATION

Southbound: United States to Mexico

PGT ADVANTAGES



All trucks and trailers have GPS locators, which tracks location in both the United States and Mexico. We know where your product is at all times.



PGT provides automated updates on your loads twice a day using custom reports that show you the exact commodity, truck, trailer, and location.

MX Carrier	LOO Arrival	FWW Ready	Crossed	Status	Comments	Trailer	Bill to	Origin	Customer	Custom Broker	Destination	BOL NUMBER	US MANIFEST
Gasa	15-Oct	28-Oct	29-Oct	Entregado	Descargo Nov/12	5418	US Steel	US Steel Dravosburg- Irvin, PA	MISA	Rali	San Jose Iturbide	421145	4169627
Gasa	22-Oct	24-Oct	25-Oct	Entregado	Descargo Nov/12	3320	US Steel	Roll and Hold- Portage, IN	Metal One	Gontor	Apaseo el Grande	6800515872-01	4175112
Gasa	23-Oct	4-Nov	6-Nov	Entregado	Descargo Nov/12	7550	US Steel	US Steel Dravosburg- Irvin, PA	MISA	Rali	San Jose Iturbide	421761	4178390
TINT	28-Oct	6-Nov	8-Nov	Entregado	Descargo Nov/12	7863	US Steel	US Steel Midwest- Portage, IN	Acero Prime	Gontor	Monterrey	535547	4179469
Gasa	4-Nov	9-Nov	9-Nov	Entregado	Descargo Nov/12	7257	US Steel	Precision Strip- Jeffersonville, IN	Metal One	Gontor	Apaseo el Grande	434328	4184359
Gasa	25-Oct	30-Oct	31-Oct	Entregado	Descargo Nov/12	7321	US Steel	Voss Clark- Jeffersonville, IN	Metal One	Rali	Apaseo el Grande	KM38518	4166479
Gasa	24-Oct	4-Nov	5-Nov	Entregado	Descargo Nov/15	7061	US Steel	US Steel Dravosburg- Irvin, PA	MISA	Rali	San Jose Iturbide	421759	4178393
Gasa	11-Nov	13-Nov	13-Nov	Entregado	Descargo Nov/15	484552	US Steel	Roll and Hold- Portage, IN	Metal One	Gontor	Apaseo el Grande	PD45917	4189441
Gasa	28-Oct	5-Nov	5-Nov	Entregado	Descargo Nov/16	7045	US Steel	Roll and Hold- Portage, IN	Metal One	Gontor	Apaseo el Grande	PD45705	4180744
Gasa	11-Nov	14-Nov	14-Nov	Entregado	Descargo Nov/17	3964	US Steel	Roll and Hold- Portage, IN	Metal One	Gontor	Apaseo el Grande	PD45919	4189444
Gasa	30-Oct	6-Nov	6-Nov	Entregado	Descargo Nov/19	72237	US Steel	Roll and Hold- Portage, IN	Metal One	Gontor	Apaseo el Grande	PD45737	4182731
Gasa	31-Oct	6-Nov	6-Nov	Entregado	Descargo Nov/19	3961	US Steel	Roll and Hold- Portage, IN	Metal One	Gontor	Apaseo el Grande	PD45739	4182730
Gasa	13-Nov	14-Nov	15-Nov	Entregado	Descargo Nov/19	526076	US Steel	Precision Strip- Jeffersonville, IN	Metal One	Gontor	Apaseo el Grande	8403054	4192172
Gasa	14-Nov	15-Nov	18-Nov	Entregado	Descargo Nov/20	7151	US Steel	Precision Strip- Jeffersonville, IN	Metal One	Gontor	Apaseo el Grande	43467	4192181
Gasa	15-Nov	16-Nov	18-Nov	Entregado	Descargo Nov/20	7310	US Steel	Precision Strip- Jeffersonville, IN	Metal One	Gontor	Apaseo el Grande	43473	4192263
Gasa	14-Nov	15-Nov	18-Nov	Entregado	Descargo Nov/21	3378	US Steel	Precision Strip- Jeffersonville, IN	Metal One	Gontor	Apaseo el Grande	8403064	4192176
TINT	4-Nov	12-Nov	13-Nov	Entregado	Descargo Nov/19	1301	US Steel	Precision Strip- Jeffersonville, IN	Metal One	Gontor	Apaseo el Grande	8403015	4193578
Gasa	18-Nov	19-Nov	20-Nov	Entregado	Descargo Nov/22	7068	US Steel	Precision Strip- Jeffersonville, IN	Metal One	Gontor	Apaseo el Grande	43470	4192267
Gasa	30-Oct	7-Nov	7-Nov	Entregado	Descargo Nov/26	7954	US Steel	Voss Clark- Jeffersonville, IN	Metal One	Rali	Apaseo el Grande	KM38942	4182973
Gasa	11-Nov	19-Nov	20-Nov	Base Nuevo Laredo		7065	US Steel	Roll and Hold- Portage, IN	Metal One	Gontor	Apaseo el Grande	PD45899	4189442
Gasa	11-Nov	21-Nov	21-Nov	Base Nuevo Laredo		7154	US Steel	Roll and Hold- Portage, IN	Metal One	Gontor	Apaseo el Grande	PD45922	4189507
Gasa	11-Nov	19-Nov	21-Nov	Base Nuevo Laredo		484773	US Steel	Roll and Hold- Portage, IN	Metal One	Gontor	Apaseo el Grande	PD45913	4189440
Gasa	1-Nov	21-Nov	23-Nov	Base Nuevo Laredo		7083	US Steel	US Steel Midwest- Portage, IN	Metal One	Gontor	Apaseo el Grande	554117	4183839
Gasa	4-Nov	21-Nov	23-Nov	Base Nuevo Laredo		7370	US Steel	US Steel Midwest- Portage, IN	Metal One	Gontor	Apaseo el Grande	554081	4183840
Gasa	8-Nov	20-Nov	21-Nov	Base Monterrey		7867	US Steel	Roll and Hold- Portage, IN	Metal One	Gontor	Apaseo el Grande	PD45871	4189032
Gasa	6-Nov	21-Nov	25-Nov	Base Nuevo Laredo		7209	US Steel	Roll and Hold- Portage, IN	Metal One	Gontor	Apaseo el Grande	PD45840	4186689
Gasa	6-Nov	21-Nov	25-Nov	Base Nuevo Laredo		53126	US Steel	Roll and Hold- Portage, IN	Metal One	Gontor	Apaseo el Grande	PD45835	4186891
TINT	4-Nov				En espera de solicitud de Carta Porte	1447	US Steel	Precision Strip- Jeffersonville, IN	Metal One	Gontor	Apaseo el Grande	8403026	4183579
Gasa	7-Nov				En espera de solicitud de Carta Porte	7060	US Steel	Heidman Steel- East Chicago, IN	Acero Prime	EXL	San Luis Potosi	136997-1	4186900
TINT	14-Nov				En espera de solicitud de Carta Porte	7273	US Steel	Heidman Steel- East Chicago, IN	Acero Prime	EXL	San Luis Potosi	150221-1	4193039
TINT	18-Jan				En espera de solicitud de Carta Porte	1333	US Steel	Heidman Steel- East Chicago, IN	Acero Prime	EXL	San Luis Potosi	150720-1	4195050
PENDING	18-Nov				Pendiente de reportar	PENDING	US Steel	US Steel Midwest- Portage, IN	Metal One	Gontor	Apaseo el Grande	555614	4195047
Gasa	18-Nov				Ya se envio carta porté	53158	US Steel	US Steel Midwest- Portage, IN	Metal One	Gontor	Apaseo el Grande	555635	4195048
Gasa	20-Nov				Ya se envio carta porté	7017	US Steel	Precision Strip- Jeffersonville, IN	Metal One	Gontor	Apaseo el Grande	43497	4196398
Gasa	21-Nov				Ya se envio carta porté	7075	US Steel	Precision Strip- Jeffersonville, IN	Metal One	Gontor	Apaseo el Grande	43498	4196402
Gasa	21-Nov				En espera de Carta Porte de Gasa	7057	US Steel	Precision Strip- Jeffersonville, IN	Metal One	Gontor	Apaseo el Grande	43499	4195132
Gasa	22-Nov				En espera de Carta Porte de Gasa	7034	US Steel	Precision Strip- Jeffersonville, IN	Metal One	Gontor	Apaseo el Grande	43505	4195147
Gasa	22-Nov				En espera de solicitud de Carta Porte	7159	US Steel	Roll and Hold- Portage, IN	Metal One	Gontor	Apaseo el Grande	PD46100	4198395
PENDING	22-Nov				Pendiente de reportar	PENDING	US Steel	Heidman Steel- East Chicago, IN	Acero Prime	EXL	San Luis Potosi	151080-1	4198412

YOUR TEAM AT PGT



Gregg Troian

President

724.462.8013

gtroian@pgttrucking.com



Chad Marsilio

Chief Operating Officer

724.462.7951

cmarsilio@pgttrucking.com



Rick Simpson

*Vice President, Terminal
Operations*

330.383.7594

rsimpson@pgttrucking.com



Sergio Villarreal

Director, Mexico Operations

724.683.1483

svillarreal@pgttrucking.com